



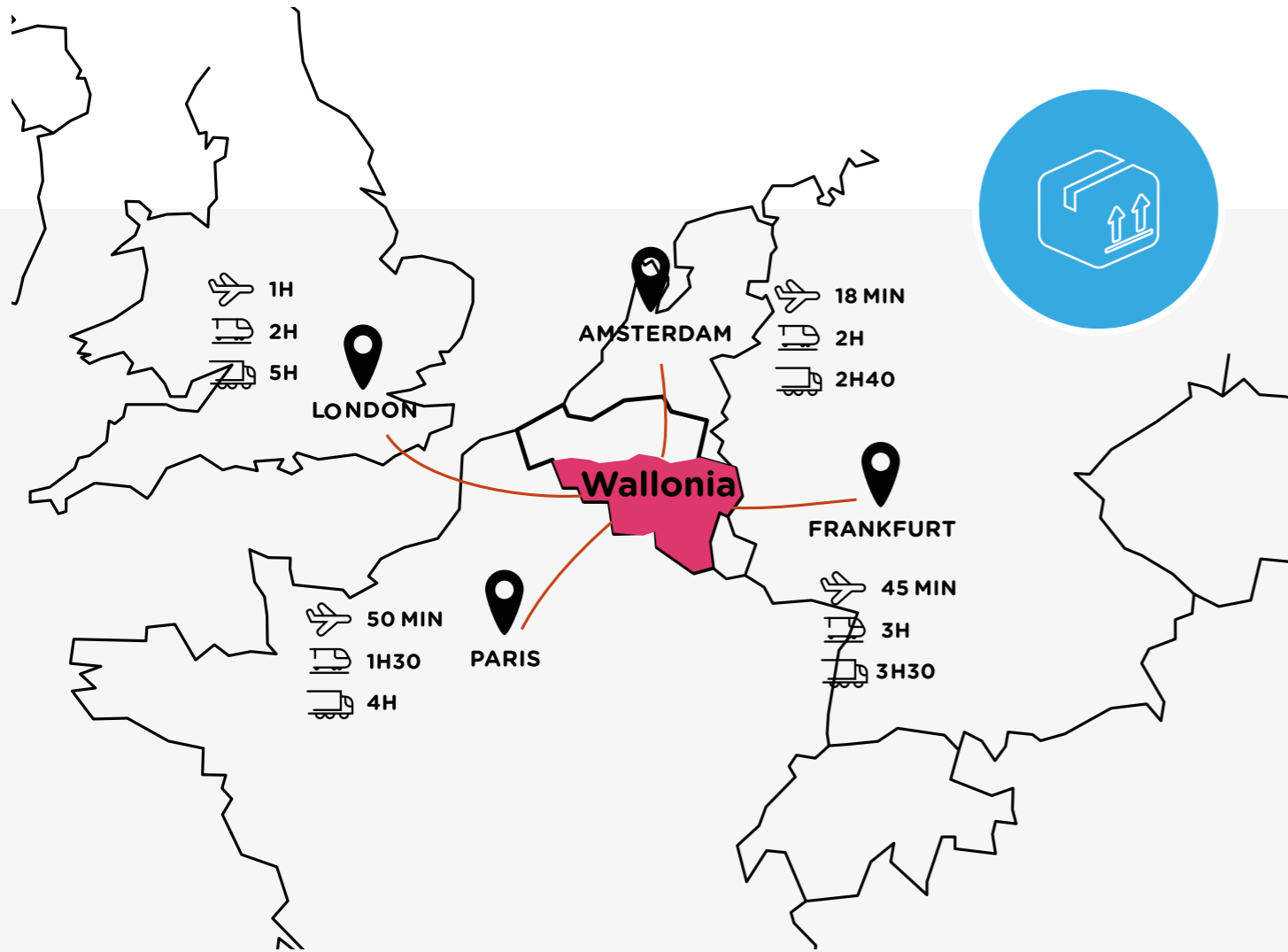
# BELGIUM Wallonia

Food Ingredients Europe 2024

19-21/11/2024

MESSE FRANKFURT

  
Wallonia.be



Wallonia has an excellent logistics infrastructure and «multimodality» is the keyword. **Liege Airport** was awarded the title of **best cargo airport in the world** for the year 2020. You will also find yourself well supported : the actors of the sector are gathered in the «Logistics in Wallonia» cluster.



# BELGIUM

---

# Wallonia

## Food Ingredients Europe 2024

Hall 4.1. STAND H70

19-21/11/2024

MESSE FRANKFURT

Wal  
Food

Wallonia.be

# WALLONIA EXPORT & INVESTMENT AGENCY

The Wallonia Export&Investment Agency (AWEX) is the institution in charge of the development and management of Wallonia's domestic and international economic relations.

Through a personalized, innovative, and sustainable approach, AWEX supports Walloon companies - regardless of their size, sector, or target market - in every step of their international endeavors. This includes exports, technological partnerships, and development abroad.

The agency's vast network of connections ensures the best advisors are always by your side. Our local anchors and agents abroad are capable of providing unparalleled insight to take your company to the next level. In addition, our connections will help establish your business in the global marketplace and promote it throughout the world. Training, incentives, and international financing are also available.

AWEX is also committed to strengthening Wallonia's position as the premier gateway for international investors seeking success in the heart of Europe. We work closely with them to inform, convince, and advise in every stage of their development.

Feel free to get in touch with one of our local or international agents via our websites listed above.

In our network of more than 400 employees in nearly 100 countries around the world, there is always someone ready and willing to support you in your approach.

Place Saintelette 2  
1080 BRUSSELS  
BELGIUM  
Phone: +32-2-421 87 45  
info@awex.be

Pascale DELCOMMINETTE | CEO

[www.awex-export.be](http://www.awex-export.be)  
[www.investinwallonia.be](http://www.investinwallonia.be)  
[www.wallonia.be](http://www.wallonia.be)



## USEFUL ADDRESSES



### BELGIUM AWEX

Espace International Wallonie-Bruxelles

Place Saintelette, 2  
B-1080 BRUXELLES  
Tel : +32 2 421 82 11  
Fax : +32 2 421 87 87  
Website : [www.walfood.be](http://www.walfood.be)  
E-mail : [info@awex.be](mailto:info@awex.be)

### Pascale DELCOMMINETTE, CEO

**Arlette TANASIJEVITCH**  
Fairs & Events Project Manager  
Tel : +32 471 55 92 52  
E-mail : [a.tanasijevitch@awex.be](mailto:a.tanasijevitch@awex.be)

### Agrifood: [agrifood@awex.be](mailto:agrifood@awex.be)

**Lucie LEJEUNE**  
Senior Agrifood Specialist  
Phone : +32 471 92 39 00  
[l.lejeune@awex.be](mailto:l.lejeune@awex.be)

**Eric LEJEUNE**  
Agrifood Business Developer  
Phone : +32 2 421 84 59 or +32 474 85 12 17  
[e.lejeune@awex.be](mailto:e.lejeune@awex.be)

### GERMANY

#### COLOGNE - Yves DUBUS

Wirtschafts- und Handelsvertretung der Wallonie (AWEX)  
Stolkgasse 25-45, 4.OG  
D-50667 KÖLN  
Tel : +49 221 25 41 73  
E-mail : [cologne@awex-wallonia.com](mailto:cologne@awex-wallonia.com)

#### MÜNCHEN - Yves DUBUS

Wirtschafts- und Handelsvertretung der Wallonie (AWEX) und der Hauptstadt Brüssel  
Maximiliansplatz 12a  
D-80333 MÜNCHEN  
Tel : +49 893 89 89 20  
E-mail : [munich@awex-wallonia.com](mailto:munich@awex-wallonia.com)

#### BERLIN - Denis LAHAYE

Wirtschafts- und Handelsvertretung der Wallonie (AWEX)  
Jägerstrasse, 52-53  
D-10117 BERLIN  
Tel: +49 30 235 96 52 60  
E-mail : [berlin@awex-wallonia.com](mailto:berlin@awex-wallonia.com)

#### HAMBURG - Denis LAHAYE

Wirtschafts- und Handelsvertretung der Wallonie (AWEX)  
c/o Belgisches Konsulat  
Langenhorner Markt 11, 4e étage  
D-22415 HAMBURG  
Tel : +49 40 532 42 02  
E-mail : [hambourg@awex-wallonia.com](mailto:hambourg@awex-wallonia.com)

# WWW.WALFOOD.BE

A WEBSITE LINKING TO 300 BUSINESSES

If you are looking for one of the following production methods:  
**organic, Halal, Kosher ...**

If you are interested in **PRIVATE LABEL** (distributor branded products)  
If your activities are based on the type of packaging: **vacuum packed, frozen, smoked, preserved ...**

## WALFOOD PRESENTS BUSINESSES WORKING IN WALLONIA IN THE FOLLOWING SECTORS:

- Bakery, confectionery and waffles
- Beers and spirits with character
- Chocolate and confectionery
- Commercial and collective catering
- Dairy and egg products and derivatives
- Delicatessen products
- Fish, crustaceans and shellfish
- Ingredients and Food Supplements
- Fruits and vegetables, Belgian fries
- Meat and cold cuts
- Spices and condiments
- Water and non-alcoholic drinks
- Miscellaneous

FOR INFORMATION ON THESE BUSINESSES OR  
THE POTENTIAL OF THE  
WALLOON AGRIFOOD SECTOR,

YOU ONLY NEED ONE ADDRESS :

[AGRIFOOD@AWEX.BE](mailto:AGRIFOOD@AWEX.BE)



Inspired by Food

Wal  
Food |   
Wallonia.be

## EXHIBITORS

## booth

8	ALGAMA INDUSTRY	4.1 H78
10	BELOURTHE	4.1 H76
12	COUPLET SUGARS	4.1 J73
14	ENZYBEL INTERNATIONAL	4.1 H74
16	EYTELIA	4.1 J77
18	FAIROILS	4.1 J71
20	FLAVENCE	4.1 J75
22	SOLUFRUIT	4.1 J79
24	SOLAREC	4.1 J69
26	SYNAPHARM INDUSTRIAL SYNTHESIS	4.1 H72

# ALGAMA INDUSTRY



Rue des Nouvelles Technologies, 2  
B - 4460 GRACE HOLLOGNE  
E-mail: [sales@algamafoods.com](mailto:sales@algamafoods.com)  
Website: [www.algamafoods.com](http://www.algamafoods.com)

### CONTACT

Laurence Labbé, Sales & Marketing  
T: +33 779 05 21 00  
E-mail: [laurence.labbe@algamafoods.com](mailto:laurence.labbe@algamafoods.com)

### ACTIVITIES, PRODUCTS AND BRANDS

ALGAMA - an innovative FoodTech company - created TAMALGA®: a groundbreaking range of microalgae-based egg-replacers. TAMALGA® is 100% plant-based powder premix, capable of replacing whole eggs in various bakery applications (brioches, cookies, donuts, cakes, madeleines, muffins, etc...). TAMALGA® is a proven eco-friendly solution, fast and easy to use, providing better nutritional quality and cost efficiency compared to eggs...

### CERTIFICATION

Vegan, GMO-free, gluten-free, no major allergen, cholesterol-free, halal suitable.

**ALGAMA**

**TAMALGA®**

**THE FIRST RANGE OF EGG-ALTERNATIVES FROM ALGAE**

Explore our four products, perfect for your bakery and pastry creations.

# BELOURTHE



Avenue des Villas 3  
 B - 4180 HAMOIR  
 T: +32 86 38 01 11  
 E-mail: info@belourthe.be  
 Website : www.belourthe.be

### CONTACT

Vincent CRAHAY, CEO  
 T: +32 86 38 01 37  
 Mobile: +32 470 50 56 64  
 E-mail: info@belourthe.be

### ACTIVITIES, PRODUCTS AND BRANDS

Belourthe is an independent company and one of the biggest cereal processing sites in Europe. It produces a complete range of reliable and safe cereal ingredients with a wide number of applications in the food industry. Our bases can bring nutritional advantages to numerous food products, as they preserve all the components of the cereals (proteins, fibers, minerals).

### CERTIFICATION

The company has a "Grade B+" quality certificate from the BRC (British Retail Consortium) and is also "Higher Level" certified by the IFS, two of the most important European quality systems.



# COUPLET SUGARS



Rue de la Sucrierie, 30  
 B - 7620 WEZ-VELVAIN  
 T: +32 69 32 36 50  
 E-mail: [info@coupletsugars.com](mailto:info@coupletsugars.com)  
 Website: [www.coupletsugars.com](http://www.coupletsugars.com)

## CONTACT

Nancy Van Velthoven, Sales & marketing director  
 Mobile: +32 498 08 85 72  
 E-mail: [n.vanvelthoven@coupletsugars.com](mailto:n.vanvelthoven@coupletsugars.com)

## ACTIVITIES, PRODUCTS AND BRANDS

Couplet Sugars has been a family business for more than 175 years and is world leader in pearl sugar. The company produces also: coated pearl sugar, colored and/or flavored pearl sugar, fondant powder, icing sugar, decorating powder (decosnow), brown sugar, and beefondant. Finally, it has created a trading unit which enables the company to offer a wider range of sweet ingredients such as Liège waffle mixes, cane sugar specialties, invers sugars, and crumbles.

## CERTIFICATION

Couplet Sugars attaches great importance to the quality of its products. It is certified FSSC-22000. Our products have received the following certifications: Kosher, Halal, RSPO, Organic and Rain Forest Alliance.



# ENZYBEL INTERNATIONAL - by Natix



Rue de Waremme, 116  
B - 4530 VILLERS-LE-BOUILLET  
Tel: +32 2 353 00 28  
E-mail: [order@enzybel.com](mailto:order@enzybel.com)  
Website: [www.enzybel.com](http://www.enzybel.com)

#### CONTACT

Erwin Kooij, Sales Director  
Tel : +32 2/353 00 28  
E-mail : [e.kooij@enzybel.com](mailto:e.kooij@enzybel.com)

#### ACTIVITIES, PRODUCTS AND BRANDS

ENZYBEL, part of Natix, is the leading reference for Out-Of-Nature and highly effective enzyme solutions. We harvest and purify unique, bioactive compounds from nature to provide sustainable, highly effective specialty ingredients. Our expertise spans the development of both plant-derived and animal-derived enzymes such as Bromelain, Chymotrypsin, Ficin, Pancreatin, Papain and Trypsin. Our enzymes are produced for Food & Beverages, Feed & Petfood, Pharma/Nutraceuticals & Technical, with unique focus: high quality products with full traceability at competitive prices.

#### CERTIFICATION

EU-GMP Pharma for API's, FSSC 22000, Halal, Kosher.





# EYTELIA



Rue de Liège, 2  
 B - 6180 COURCELLES  
 T : +32 69 32 36 50  
 E-mail: c.willaert@eytelia.eu  
 Website: www.eytelia.eu

### CONTACT

Christiaan WILLAERT, CEO  
 Mobile: +32 475 95 07 50  
 E-mail: c.willaert@eytelia.eu

### ACTIVITIES, PRODUCTS AND BRANDS

EYTELIA is the European leader in the development and production of SILICIUM-based products for health and well-being. INNOVATION: plant-based BLOOSIL<sup>®</sup>, produced using a patented process. A soluble mesoporous silica of plant origin, producing OSA. An ingredient that supplies silicon and/or improves the stability and bioavailability of other active ingredients.

100% plant-based, 100% Silicium Organic, Vegan, allergen-free, gluten-free, No Artificial Colors or Flavors...

### CERTIFICATION

- Cosmetic GMP (Good Manufacturing Practices)
- GHP (Good Hygiene Practices)
- Traceability through S.A.P. IT tool
- ISO 22000

We also pay particular attention to HACCP implementation and to the traceability of the components used in the composition of our manufactured products, in order to guarantee their quality.



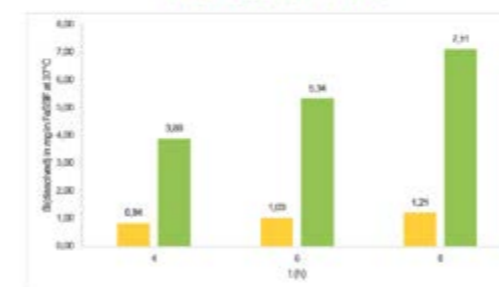
The **FIRST** highly soluble Plant based **SOLID Silicium**

- ✓ Highly soluble Bamboo Silica
- ✓ Builds collagen
- ✓ Branded ingredient

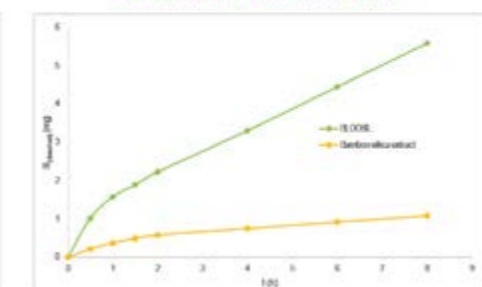


- ✓ Our plant based innovative branded ingredient produced from a patented process.
- ✓ A soluble plant based mesoporous silica.
- ✓ An ingredient that delivers Silicium and/or improves the stability and bioavailability of other active ingredients.
- ✓ The Solid plant based silica with highest amount of available Silicium.

Si released in function of time



Dissolution kinetics BLOOSIL<sup>®</sup> vs Bamboo silica extract



After 8h of dissolution trial in FaSSIF at 37°C, the amount of Si dissolved of **bamboo silica extract** is increased **5 times** when the ingredient is processed with the Si'Innov technology.

# FAIROILS



Rue de l'Innovation 5  
B-7822 GHISLENGHIEN  
T : +32 68 28 43 16  
E-mail: sales@fairoils.com  
Website: www.fairoils.com

### CONTACT

Julie PLANCHIN, Sales Account Manager  
Mobile: +336 470 09 61 52  
E-mail : julie.planchin@fairoils.com

### ACTIVITIES, PRODUCTS AND BRANDS

At Fairoils, we responsibly produce pure natural oils of food grade quality. We've built an integrated supply chain based on an ethical and sustainable model, that begins at the farm. We unite the efforts of small-scale growers across Eastern Africa with our own commercial farms and local processing facilities, to produce a wide variety of essential and vegetable oils. Fairoils' operates in Kenya, Uganda, Madagascar and Tanzania.

### CERTIFICATION

ISO9001, Fair For Life (Ecocert), Food (FSSC22000 at production site in Kenya and IFS Wholesale at EU warehouse), Organic (Ecocert and NOP), ECOVADIS Platinum (Distribution platform), Kosher



# FLAVENCE



Parc Industriel  
 Paysager de Tyberchamps, 25  
 B - 7180 SENEFFE  
 T : +32 64 23 88 00  
 E-mail: info@flavence.com  
 Website: www.flavence.com

## CONTACT

Arnaud DE BEUKELAER, Managing Director  
 T: +32 64 23 88 00  
 E-mail: info@flavence.com

## ACTIVITIES, PRODUCTS AND BRANDS

Flavence creates and produces high-quality natural and organic flavours and extracts for food and beverage manufacturers all over Europe.

Flavence provides:

- A large range of flavouring profiles adapted to your needs;
- A wide choice of natural, organic certified and organic-suitable flavours and extracts;
- Availability from 1 kg to 100T;
- A R&D laboratory able to develop tailor-made products.

## CERTIFICATION

Flavence is FSSC2000 certified. This certification is one of the most demanding with respect to food quality management for ingredient manufacturers. On request, kosher and/or halal certificates can be obtained when applicable.



# SOLUFRUIT



Rue Kan, 2  
 B - 4880 AUBEL  
 T: +32 87 32 27 20  
 E-mail: [info@solufruit.com](mailto:info@solufruit.com)  
 Website: [www.solufruit.com](http://www.solufruit.com)

## CONTACT

Madelyne DERIVAUX, Business Developer  
 Tel: +32 472 73 44 54  
 E-mail: [madelyne.derivaux@solufruit.com](mailto:madelyne.derivaux@solufruit.com)

## ACTIVITIES, PRODUCTS AND BRANDS

SOLUFRUIT, the ingredient division of Siroperie Meurens, is specialised in the transformation of ORGANIC and CONVENTIONAL dried fruits (dates, figs, prunes, raisins, apricots) in extracts and/or purees. These products are clean and clear label solutions for the food industry as well as other industries (tobacco, flavours,...)

Our products are natural humectants, sweetening alternatives, coloring, flavouring agents and natural preservatives.

## CERTIFICATION

IFS, FSSC22000, Organic, Halal et Kosher



# SOLAREC



Rue de Saint-Hubert, 75  
 B - 6800 LIBRAMONT  
 T: +32 61 22 98 11  
 E-mail: info@solarec.be  
 Website: www.solarec.be

## CONTACT

Eric DEMOLLIN, Business Development Manager B2B  
 T: +32 61 22 99 39  
 Mobile: +32 491 71 11 31  
 E-mail: e.demollin@solarec.be

## ACTIVITIES, PRODUCTS AND BRANDS

Located in the heart of Europe, Solarec is active in the dairy industry field. Subsidiary of the Laiterie des Ardennes, we work hard every day to bring a better life to our farmers by offering the best of the milk to the world. Each year, Solarec transforms 1.6 billion liters, which is converted into 110,000 tons of milk powders, 50,000 tons of butter, 170,000,000 liters of UHT milk and 28,000 tons of mozzarella.

## CERTIFICATION

The entire product range is Halal and Kosher certified. Some products follow organic, PDO or meadow milk certification. The effectiveness of the preventive and corrective actions implemented is recognized by IFS and FSSC 2200.



# SYNAPHARM INDUSTRIAL SYNTHESIS



Rue des Technologies, 2B  
 B - 4432 ALLEUR  
 Mobile : +32 474 90 02 91  
 E-mail : info@synapharm.com  
 Website: www.synapharm.com

#### CONTACT

Isabelle GROMMET, General Manager  
 T: +32 4 254 50 35  
 Mobile: +32 474 90 02 91  
 E-mail : isabelle.grommet@synapharm.com

#### ACTIVITIES, PRODUCTS AND BRANDS

Discover ATAMg<sup>®</sup>, providing innovation in brain health thanks to Magnesium Acetyltaurinate. ATAMg<sup>®</sup> leverages the acetylation of taurine to increase its efficiency to cross the blood-brain barrier, thereby increasing magnesium and taurine levels directly in the brain. ATAMg<sup>®</sup> helps alleviate mood disorders and bring calm and relaxation. Moreover, clinical studies show that ATAMg<sup>®</sup> significantly relieves the symptoms of premenstrual syndrome (PMS).

**ATA Mg<sup>®</sup>**  
 Magnesium  
 N-Acetyltaurinate

**PATENTED**

- High bioavailability
- Rapid brain absorption
- Brain Health
- Women Health
- Very good intestinal tolerance - no side effects
- No taste
- Scientifically proven

[atamg.com](http://atamg.com) A SYNAPHARM PRODUCT

avec la collaboration de



Wagrality (BE) was born from a collaboration between industries, universities, research and training centers. His goal? Accelerate value creation and strengthen the industrial ecosystem through partnership, innovation and international openness.

Contact our international expert!



**Yuan CHAI**  
International Affairs Officer  
yuan.chai@wagrality.be

wagrality.be



**Maison de l'Industrie Technologique**

Rue Auguste Piccard, 20  
6041 Gosselies - Belgium  
+32 (0) 71 919 286



Wallonia.be

EXPORT  
INVESTMENT

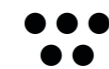
## WALLONIA EXPORT & INVESTMENT AGENCY

Place Saintelette 2  
B - 1080 BRUSSELS  
BELGIUM  
Phone: +32 2 421 82 11

info@awex.be  
www.awex-export.be

Avenue des Dessus de Lives 6  
B - 5101 NAMUR  
BELGIUM  
Phone: +32 81 33 28 50

welcome@investinwallonia.be  
www.investinwallonia.be



Wallonia.be

Feel inspired

